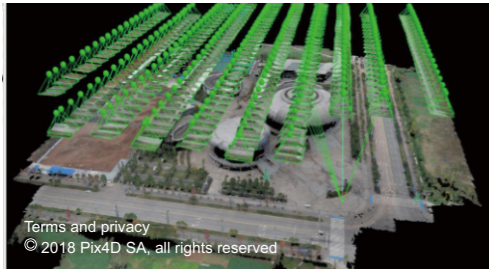


SOFTWARE

A Professional Mapping Drone



Terms and privacy
© 2018 Pix4D SA, all rights reserved

▶ Pix4D mapper

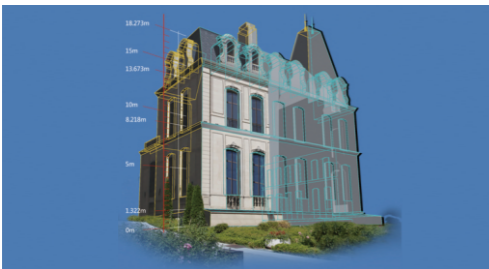
Automatic formation of 3D point cloud, model, orthophoto image and surface model



▶ HiData

Drawing:
Internal and external combination

Data:
Library integration



▶ DP-Modeler

Interactive monomer modeling, intelligent texture mapping, automatic retrieval of multi-angle images.



Terms and privacy
© 2018 Bentley Systems, all rights reserved

▶ Smart 3D

Modular operation, high efficiency output fine 3D texture

— INTELLIGENT ASSISTANT

- ▶ Intelligent planning of optimal routes, unified management of all engineering elements.
- ▶ Real-time monitoring of flight status, providing high-precision POS data.



HiScan-C SU1

Fully Integrated Mobile Mapping Solution

- The HiScan-C is a fully integrated mobile mapping system with Hi-Target advanced 3D laser and geo-referencing digital imagery which has proved to be a perfect solution when a massive amount of asset data needs to be collected in a short time.



— KEY FEATURES

